

IHP-690

Air Cooled
Internal Mounted
Nema-4/4X

Internal Mount Air Conditioner/Heat Exchanger

24 VDC
390 BTU/HR

FEATURES

- Compact (only 17.4" X 8" X 7.8")
- Mounts and operates in any orientation, inside enclosure
- Available in two installation styles:
 - **Style A:** Installs from inside of the enclosure
 - **Style B:** Installs from outside of the enclosure
- Low vibration and noise
- No moving parts except fans
- Environmentally safe
- No compressor, fluorocarbons or filters
- Virtually maintenance-free operation
- Stainless steel housing
- Efficient heat exchanger mode (ECO-Mode)
- Weight 17 LBS.

CONTROL TEMPERATURES

Active Cooling	35 °C
Heat Exchanger (ECO-Mode)	25 °C
Active Heating	10 °C
Typical Hysteresis	5 °C
Operating Ambient	-40/+70 °C
Operating Enclosure	-10/+60 °C

POWER INPUTS

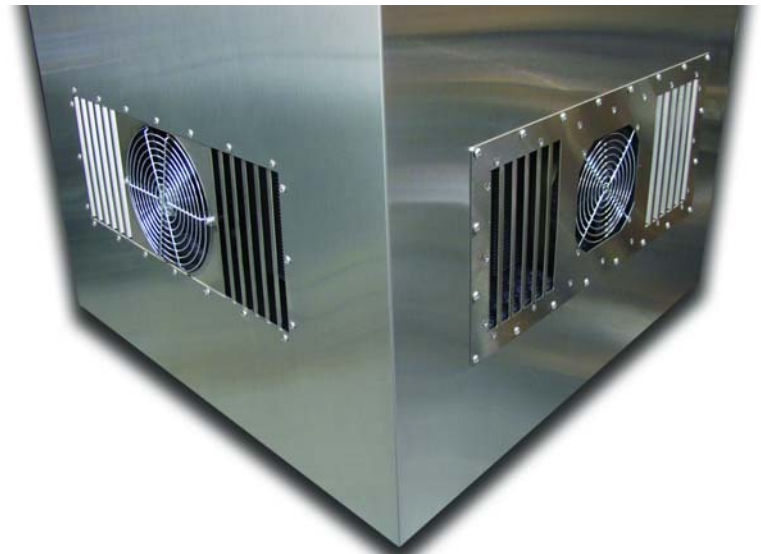
Voltage	24 VDC
Current, Active	15 AMPS
Current, ECO-Mode	0.5 AMPS

PERFORMANCE RATINGS

Cooling (Traditional)	392 BTU/HR
Cooling (Din 3168)	115 WATTS
Cooling COP (at L35 L35)	0.44
Heating (Traditional)	> 900 BTU/HR
Heating (Din 3168)	> 264 WATTS
Heating COP	> 1.0

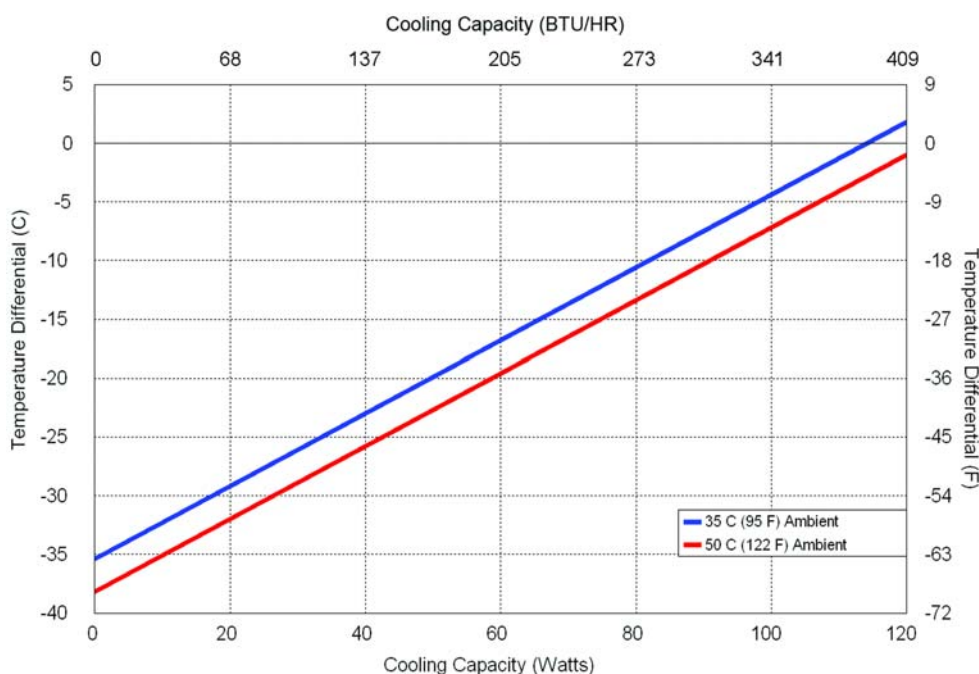
INCLUDES

- Temperature controller
- Mounting gasket and hardware
- Power input leads
- Power saving heat exchanger mode (ECO-Mode)



Picture above shows both installation styles
Shown on the left is the **Style A** (installs from inside of the enclosure)
Shown on the right is the **Style B** (installs from outside of the enclosure)

PERFORMANCE CURVE



Equation of Line: $y = \Delta T(^{\circ}\text{C})$ $x = \text{Capacity (Watts)}$		
Ambient Temp	35°C	50°C
IHP-690	$y = .31x - 35.4$	$y = .31x - 38.2$

Air Conditioner - Air Cooled

IHP-690

MOUNTING STYLE

Internal Mounted

ENVIRONMENTS SERVED

NEMA-4 IP 56

RATING (TRADITIONAL)

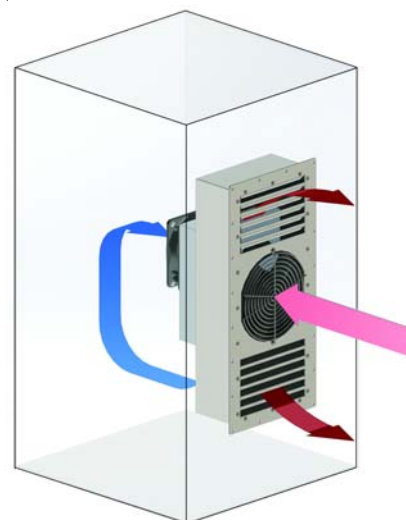
392 BTU/hr @ 0 °F ΔT

511 BTU/hr @ +20 °F ΔT

RATING (DIN 3168)

115 Watts L35 L35

75 Watts L35 L50

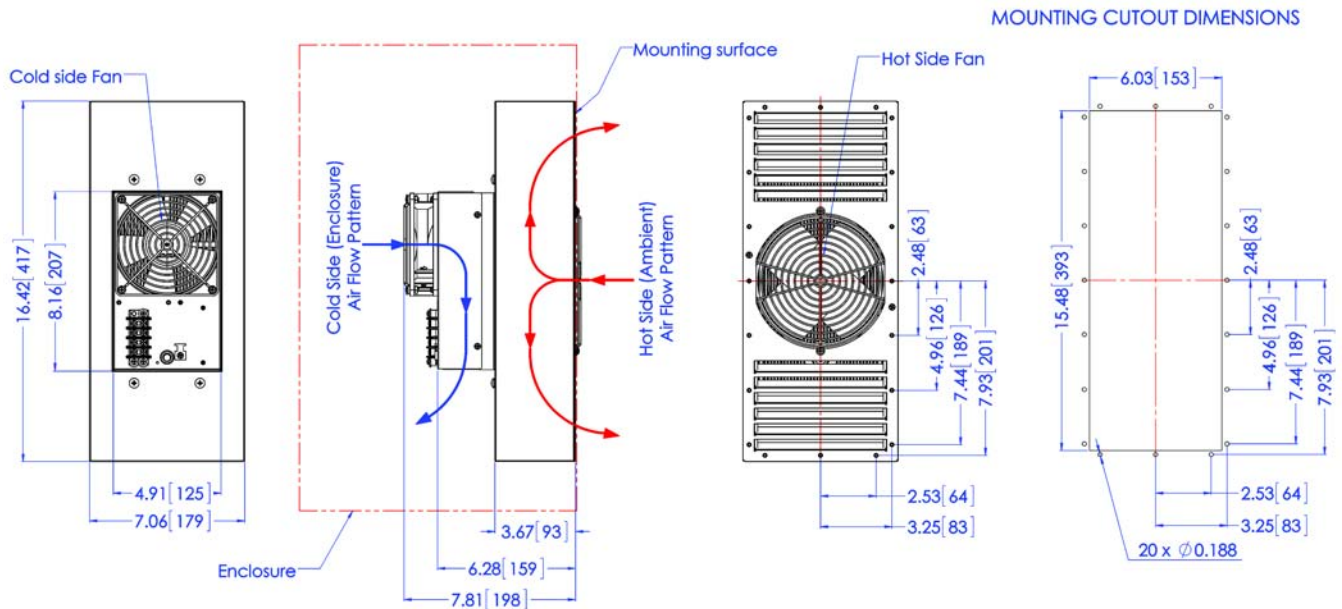


Air Flow Pattern

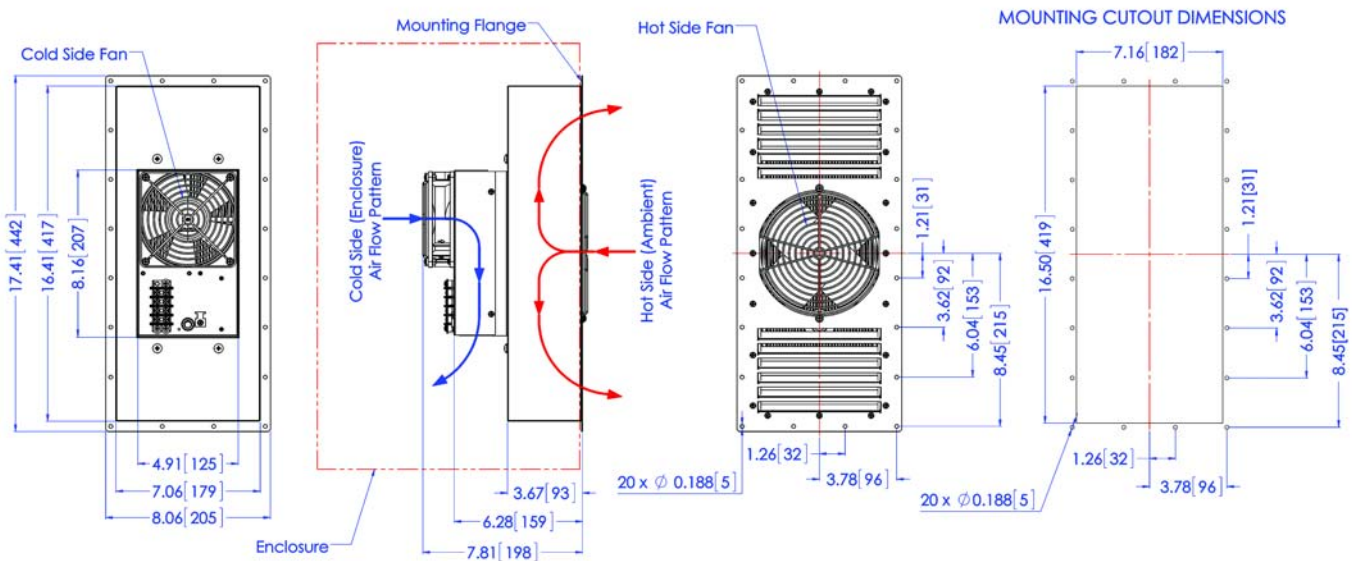
SPECIFICATIONS

MODEL	PART NUMBER	NOTES	INSTALLATION STYLE	TEMPERATURE CONTROL	ENVIRONMENT
IHP-690XE	B-M0J5-4-000	Cool only, sealed hot side fan	A	TC-4F	NEMA-4/4X, IP 56
IHP-690XEHC	B-M095-5-000	Heat/Cool, sealed hot side fan	A	None*	NEMA-4/4X, IP 56
IHP-690XEHC	B-M0I5-5-000	Heat/Cool, sealed hot side fan	A	TC-7F	NEMA-4/4X, IP 56
IHP-690XE	B-M0J5-4-100	Cool only, sealed hot side fan	B	TC-4F	NEMA-4/4X, IP 56
IHP-690XEHC	B-M095-5-100	Heat/Cool, sealed hot side fan	B	None*	NEMA-4/4X, IP 56
IHP-690XEHC	B-M0I5-5-100	Heat/Cool, sealed hot side fan	B	TC-7F	NEMA-4/4X, IP 56

* For controller options contact TECA; Heating function via reverse polarity (controller dependent)

DIMENSIONS (Style A: Installs from inside of the enclosure)

Dimensions do not include hardware
 Mounting hardware and gasket included but not shown
 Dimensions: Inches [Millimeters]

DIMENSIONS (Style B: Installs from outside of the enclosure)

Dimensions do not include hardware
 Mounting hardware and gasket included but not shown
 Dimensions: Inches [Millimeters]